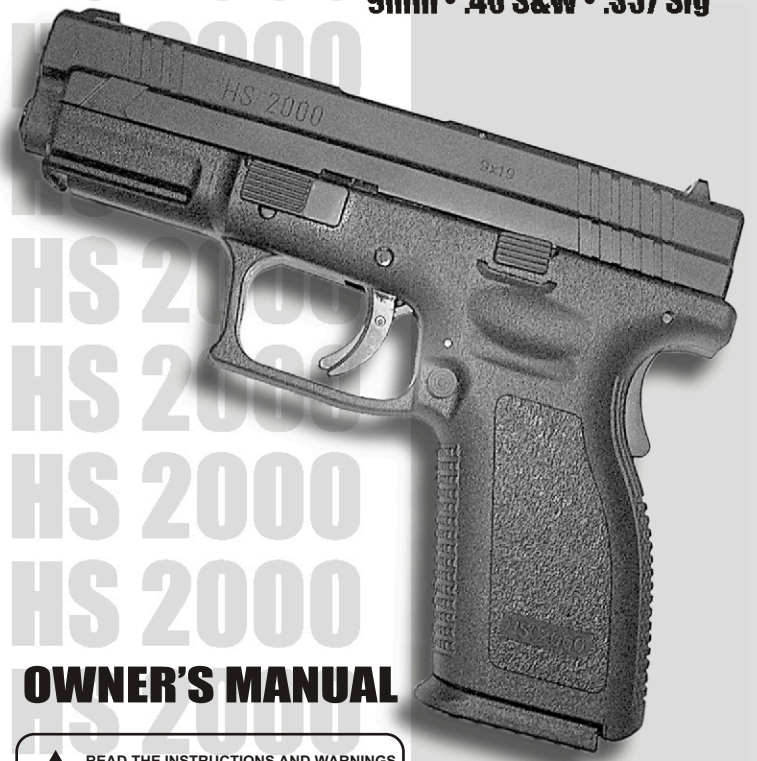


HS 2000
HS 2000
HS 2000
HS 2000
HS 2000
HS 2000
HS 2000
HS 2000
HS 2000
HS 2000
HS 2000
HS 2000
HS 2000


HS 2000
HS 2000
HS 2000
HS 2000
HS 2000
HS 2000
HS 2000
HS 2000
HS 2000
HS 2000
HS 2000
HS 2000
HS 2000

HS 2000

9mm • .40 S&W • .357 Sig



OWNER'S MANUAL

 READ THE INSTRUCTIONS AND WARNINGS
IN THIS MANUAL CAREFULLY BEFORE
USING THIS FIREARM.

Distributed by:

STRONGHAND
INCORPORATED

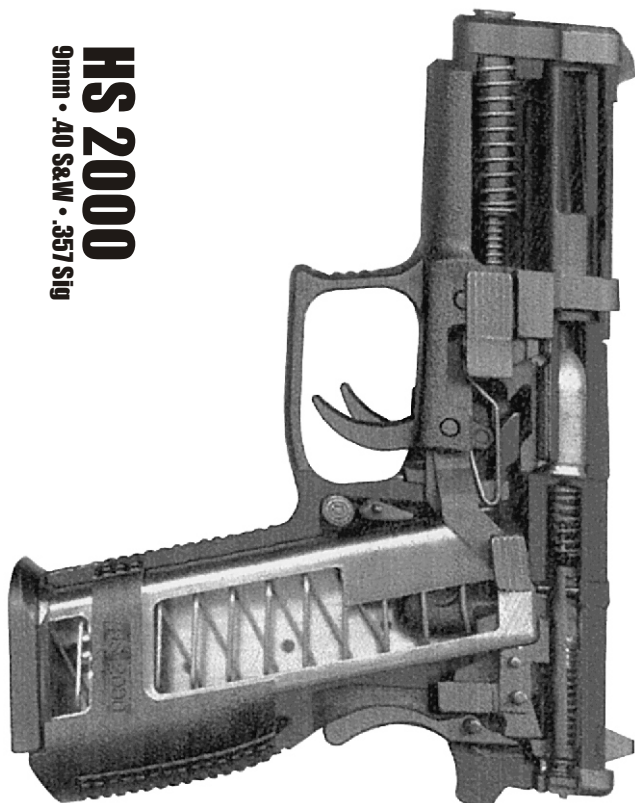
www.stronghandinc.com

Made in CROATIA

- 2 Slide
- 3 Barrel
- 26 Firing Pin Safety Retaining Pin
- 27 Firing Pin Locking Plate
- 28 Firing Pin Spring Guide
- 29 Firing Pin Status Indicator
- 30 Firing Pin Dampening Spring
- 31 Firing Pin
- 32 Firing Pin Spring
- 33 Firing Pin Safety
- 34 Firing Pin Safety Spring
- 35 Firing Pin Retainer Pin
- 36 Extractor
- 37 Loaded Chamber Indicator
- 38 Loaded Chamber Indicator Pin
- 39 Loaded Chamber Indicator Spring
- 40 Rear Sight
- 41 Front Sight
- 42 Recoil Spring Assembly

HS 2000 SLIDE PARTS LIST

CUT AWAY



HS 2000
9mm • .40 S&W • .357 Sig

Manufactured by advanced state-of-the-art production processes, the HS 2000 is a mechanically locked, short recoil operated pistol featuring an automatic firing pin, block / drop safety, grip safety, trigger safety and out of battery safety. Firing takes place with each pull of the trigger until the magazine is empty. The slide stays open after you've fired the last shot. The action of the HS 2000 pistol utilizes a tilting barrel design in which the barrel and slide are locked together at the moment of firing. After firing, the barrel and slide recoil to the rear a short distance while still locked together. After this initial movement, the barrel tilts downward from its locked position, permitting full recoil of the slide and the extraction and ejection of the spent cartridge case. The user of this or any auto loading pistol must always remember that when fired, it automatically reloads and recocks itself, so that simply pulling the trigger will fire the pistol again. Therefore, an auto loading pistol user must be particularly conscious to always keep the pistol pointed in a safe direction. You should become familiar with your pistol and its operation before using any live ammunition or actual shooting. Study the instructions carefully and make sure you understand the pistol's operating guidelines.

GENERAL DESCRIPTION

INTRODUCTION

SAFETY INFORMATION

BEFORE YOU TAKE YOUR NEW HS 2000 OUT OF THE BOX, PLEASE READ THE FOLLOWING INFORMATION.

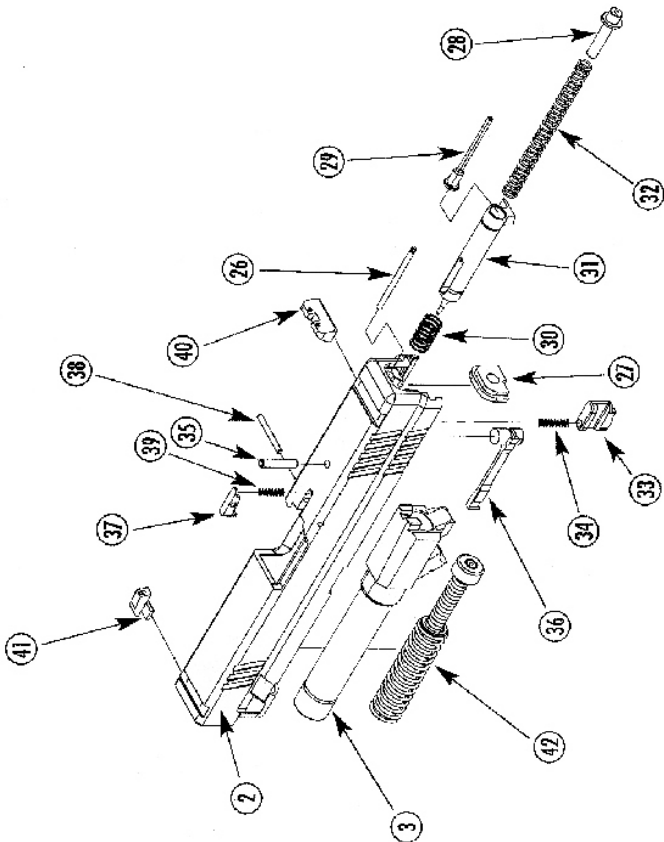


IT IS VITAL TO YOUR SAFETY AND THE SAFETY OF OTHERS.

- 1 Receiver
- 21 Magazine Catch
- 22 Magazine Catch Pin
- 23 Magazine Catch Spring
- 24 Magazine Release Button
- 25 Firing Pin Safety Lever
- 43 Magazine Body
- 44 Magazine Spring
- 45 Magazine Follower
- 46 Magazine Locking Plate
- 47 Magazine Base
- 10 Sear
- 11 Sear Pin
- 12 Ejector Pin
- 13 Sear Spring
- 14 Ejector
- 15 Grip Safety
- 16 Grip Safety Pin
- 17 Grip Safety Spring
- 18 Slide Stop Lever
- 19 Slide Stop Spring
- 20 Disassembly Lever
- 4 Locking Block
- 5 Locking Block Pin / Trigger Pin-2
- 6 Locking Block Pin / Trigger Pin Retainer-2
- 7 Trigger with Safety
- 8 Trigger Bar
- 9 Trigger Bar Spring
- 1 Sear
- 10 Sear
- 11 Sear Pin
- 12 Ejector Pin
- 13 Sear Spring
- 14 Ejector
- 15 Grip Safety
- 16 Grip Safety Pin
- 17 Grip Safety Spring
- 18 Slide Stop Lever
- 19 Slide Stop Spring
- 20 Disassembly Lever

HS 2000 FRAME PARTS LIST

HS2000 SLIDE PARTS DIAGRAM



- 17 Heat Treated, Fully Machined, Brunital Coated, Milled Slide
- 18 Cold Hammer Forged Steel Barrel
- 19 Captive Dual Tension Recoil Spring with Stand-Off Device
- 20 Light Weight, Ultra High-Impact Polymer Frame
- 21 Oversized Heat-Treated Steel Slide Rails
- 22 Grooved Slide Take Down Lever
- 23 Chrome Plated Drop Free Magazine
- 1 Receiver
- 21 Magazine Catch
- 22 Magazine Catch Pin
- 23 Magazine Catch Spring
- 24 Magazine Release Button
- 25 Firing Pin Safety Lever
- 43 Magazine Body
- 44 Magazine Spring
- 45 Magazine Follower
- 46 Magazine Locking Plate
- 47 Magazine Base
- 10 Sear
- 11 Sear Pin
- 12 Ejector Pin
- 13 Sear Spring
- 14 Ejector
- 15 Grip Safety
- 16 Grip Safety Pin
- 17 Grip Safety Spring
- 18 Slide Stop Lever
- 19 Slide Stop Spring
- 20 Disassembly Lever

ASSEMBLY GROUPS

NOMENCLATURE

HS 2000
9mm • .40 S&W • .357 Sig



- 1 Night Sights Available
- 2 Low Profile Dovetail Sights
- 3 Captive Recoil Spring
- 4 Grip Safety
- 5 Loaded Chamber Indicator
- 6 Firing Pin Status Indicator
- 7 Trigger Safety
- 8 Grooved Trigger Guard
- 9 Ambidextrous Magazine Release
- 10 Slide Take Down Lever
- 11 Thumb Rest
- 12 Light Weight Ultra High-Impact Polymer Frame
- 13 Drop Free Magazine
- 14 Piccattiny Rail
- 15 Vertically Grooved Target Trigger
- 16 Slide Catch Lever

OPTIONAL ACCESSORIES
Blade Tech Holsters, M3 & M6 Tactical Sights, PT Night Sights, M3 & M6 Tactical Illuminator, Saf-T-Block.

Number of Safeties	Four (4)
Special Features	Drop Safety, Ambidextrous Magazine Release, under water up to 3.0 m, Firing Pin Block Indicator, Firing Pin Status Indicator, Fires Trigger Safety, Grip Safety, Loaded Chamber Drift adjustable and replaceable (Rear) square notch, dovetail, two dot (Front) blade, dovetail, dot Sights
Length (overall)	7.2 in / 180 mm
Weight (full 15 rnd mag)	32.03 oz / 910 g
Weight (empty)	22.88 oz / 650 g
Magazine Capacity	15 rounds (.40 S&W, .357 Sig) 10 rounds (9mm) steel slide rails
Frame	Improved Polymer with oversized heat treated loading, safety locked action
Operation	Short recoil, locked breach mechanism, self-
Caliber	9x19 mm, .40 S&W, .357 Sig

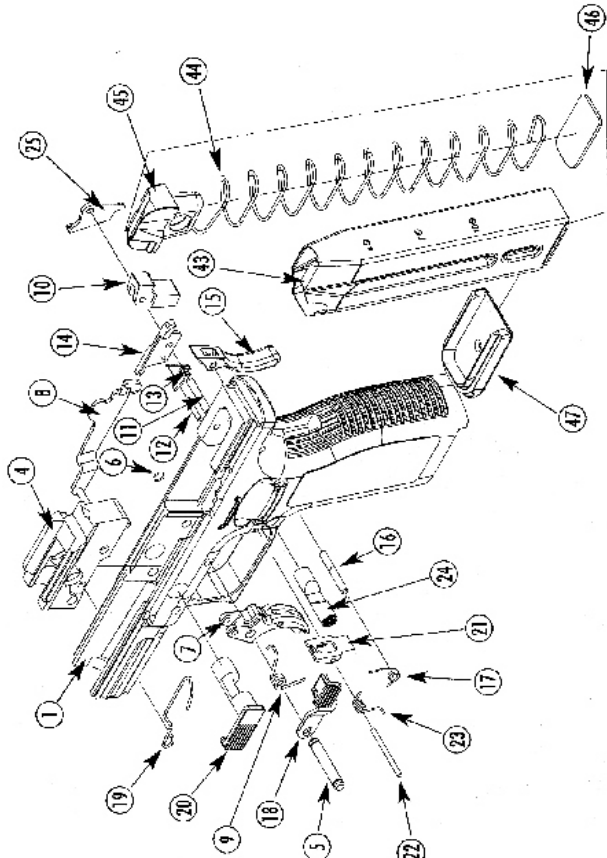
1. Firing pin block / drop safety
2. Grip safety
3. Trigger safety
4. Out of battery safety

Mechanically-Locked, Recoil-Operated, Semi-automatic Pistol, Safety Locked Action with 4 safeties:

SPECIFICATION OF THE HS 2000 PISTOL

TECHNICAL SPECIFICATION

HS 2000 FRAME PARTS DIAGRAM



WARNING !!!
Use Full Metal Jacket and Copper Coated bullets only. Should you decide to use LEAD, barrel should be cleaned and lead-free before shifting to full metal and copper heads. Failure to do so will lead to barrel damage caused by pressure build-up in the chamber.

1. Point the pistol in a safe direction.
2. Insert loaded magazine (23) and check that the magazine catch (9) engages.
3. With your finger outside the trigger guard, and pointing the pistol in a safe direction, draw the slide (17) back to the rear stop and allow it to fly forward. The pistol is now ready to fire.
4. The loaded chamber indicator (5) will be in the up position.
5. The firing pin status (6) indicator will be in the "out" position.

LOADING THE PISTOL

4 SAFETY DEVICES

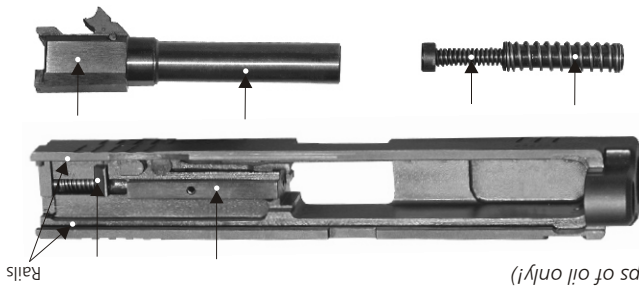
The HS 2000 has no traditionally and externally located manual safety lever. Therefore make sure that the trigger is only touched if you intend to fire.

1. **GRIP SAFETY.** It is located on the upper rear portion of the pistol's grip. Properly gripping the HS 2000 in your shooting hand will automatically press the grip safety. Once the grip safety is depressed, the sear can disengage from the firing pin if the trigger and the trigger safety are pulled.
Note: While the grip safety is engaged, the entire action of the pistol is locked.
2. **TRIGGER SAFETY.** It is incorporated into the trigger in the form of a lever, and in the untouched state locks the trigger from moving backward. The trigger can only be pulled if depressed together with the trigger safety. The safety locked action pistol is, therefore, ready for firing at anytime once the grip safety is disengaged and the trigger with the trigger safety is pulled.
3. **FIRING PIN BLOCK/DROP SAFETY.** A spring loaded pin projects into the firing pin cut-out, and blocks the movement of the firing pin. This safety is only released when the grip safety is disengaged, the trigger safety is disengaged, and the trigger is pulled back.
4. **OUT OF BATTERY SAFETY.** A cut out in the slide will only allow the trigger bar to disengage the sear from the firing pin only if the slide is fully forward and in battery.

The SAFETY DEVICES 1, 2, and 3 above are designed to prevent the weapon from unintentional discharge. SAFETY DEVICE 4 is designed to protect the shooter from firing the pistol in an unsafe condition.

NO SAFETY MECHANISM, HOWEVER, IS A SUBSTITUTE FOR PROPER GUN HANDLING. Any safety mechanism can break down or malfunction. YOU, AND YOU ALONE, ARE THE ULTIMATE SAFETY MECHANISM.

DO NOT OVER LUBRICATE YOUR HS PISTOL. Large quantities of oil or grease will collect unburnt powder and dirt which will accelerate wear. Excessive oil creates dangerous stresses on chamber and barrel.



Wipe and dry the pistol before applying lubricants. Thinly oil (one drop) the pistol on these spots: (Apply the external surface of the barrel with 2 drops of oil only!)

LUBRICATING THE PISTOL

NOTE: Some cleaning solvents may be harmful to the finish of your pistol. Read the solvent manufacturer's product use instructions and warning labels before using.

Use a small nylon bristle brush to thoroughly clean the breach face and locking insert. Wipe the interior and exterior of the barrel free of all residue. Clean the barrel and the chamber from the rear using a cleaning rod and brush of the correct caliber. Never clean the barrel from the muzzle end. The pistol should be checked for cleanliness. Use firearm cleaning solvent for cleaning, do not use gasoline! All solvent should then be wiped clean before oiling.

CLEANING THE PISTOL

CLEANING THE HS 2000 PISTOL

SIGHTS

SIGHT ADJUSTMENTS

The HS 2000 Pistols are equipped with a rear sight which is adjustable for windage only. The rear sight can be drifted laterally in its dovetail on the top of the slide by tapping it with a wooden or nylon drift or similar implement. Move the rear sight in the direction you want the shot to move on the target. The front sight is fixed. Both front and rear sights are provided with white-dot inserts for rapid target acquisition and easy alignment of the sights to obtain a correct sight picture.

SIGHTS

The HS 2000 Pistol is equipped with drift adjustable fixed sights which have proven their worth under severe conditions. The sights consist of a rear sight and front sight blade, designed and dimensioned to ensure rapid target acquisition and correct sight picture even when visibility is poor. You can adjust the sights as follows:

WINDAGE. Change windage by moving the rear sight either to the left or right in its dovetail. When you do this, follow the rear sight rule: Move the rear sight in the direction you want the group to go. Moving the rear sight 0.020" in the dovetail changes the point of impact by approximately 3" at 25 yards.

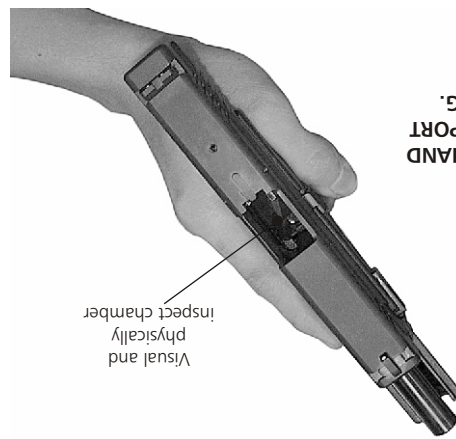
ELEVATION. There are different height available for the rear sight. The sights are numbered according to their height. You can change elevation by changing the rear sight. Each rear sight change will move the impact of the bullet approximately 2" at 25 yards.

Remember, a higher rear sight will raise the impact of the bullet; a lower rear sight will lower the impact of the bullet.

SIGHT OPTIONS

FRONT SIGHT		REAR SIGHT	
Number	Height	Number	Height
no mark	5.60 mm	G	5.80 mm
		no mark	6.30 mm
		D	6.80 mm

WARNING: NEVER PLACE YOUR HAND OVER THE EJECTION PORT WHEN UNLOADING.



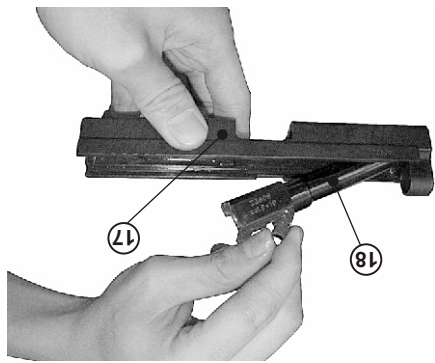
1. Point the pistol in a safe direction.
2. Keep your finger off the trigger (15) and remove the magazine (23).
3. Pull the slide (17) rearward one or more times to ensure the chamber is empty. Watch for a live round or empty case to be ejected. Pull slide (17) rearward and lock it with the slide catch lever (16) holding the slide open.
4. Make sure the last round in the chamber has been extracted and ejected. Visually and physically check the chamber and the magazine well to make sure the pistol has been unloaded. Physically insert your index finger in the chamber and feel the presence of a round or cartridge case in the chamber. The pistol is now unloaded and safe.
5. Depress the slide catch lever (16), the slide (17) will be released forward.
6. Unload and store the magazine (23).
7. Pick up and store all loose rounds and empty cartridge cases.
8. The pistol must be cleaned after every shooting session.

UNLOADING THE PISTOL

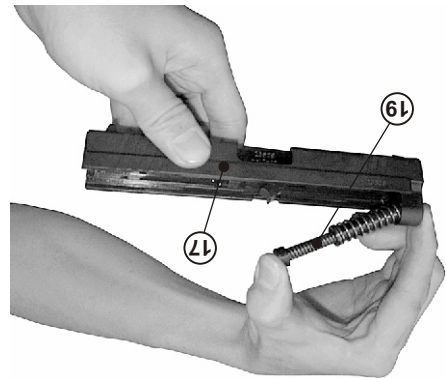
RELOADING DURING SHOOTING

When the magazine is empty, the slide catch lever (16) holds the slide open. Press the magazine release (9) to remove the empty magazine (23) and insert a loaded one. Push down the slide catch lever (16) with the thumb of the shooting hand, or draw back the slide (17) and allow it to fly forward. The pistol is again loaded and ready to fire in the safety locked position mode.





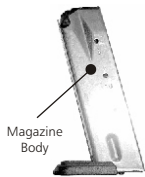
8. Remove the barrel (18) from the slide (17).



7. Remove the dual tension recoil spring (19) from the slide (17). Take care to control the release of the spring tension.

FIELD STRIPPING THE PISTOL

MAGAZINE DISASSEMBLY



Magazines do not normally need to be disassembled for cleaning each time your HS 2000 pistol is cleaned. Disassembling and cleaning magazines at less frequent intervals (perhaps every 3-4 months) is normally sufficient, unless the magazines have been exposed to dirt or other adverse conditions or inspection indicates the need for cleaning.

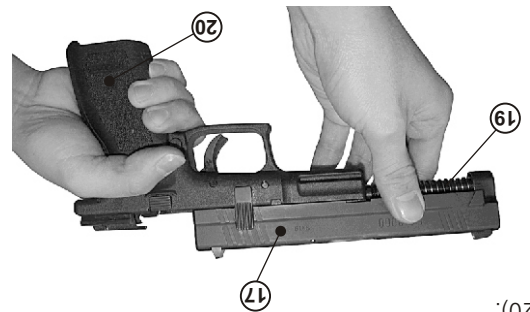
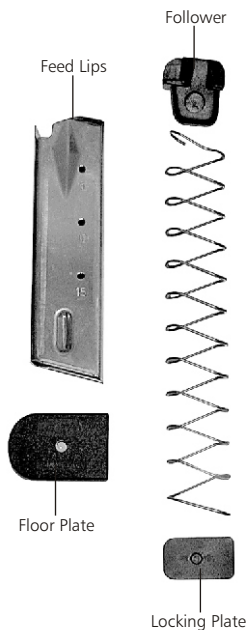
UNLOADED MAGAZINE INSPECTION

1. Inspect condition of magazine body for signs of damage or dirt (feed lips and plate).
2. Inspect free movement and spring action of follower.
3. Inspect that the magazine floor plate is properly locked.
4. Inspect for smooth insertion of magazine into pistol and proper engagement of floor plate magazine lock/release.

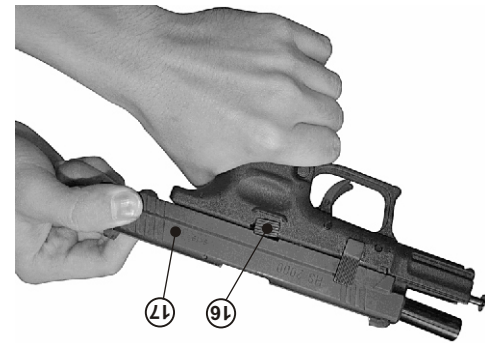
SAFETY CAUTION:

The magazine spring, follower, and inner floor plate are under spring tension, and can cause eye or other injury if not controlled during removal. Wear protected safety glasses to reduce the risk of injuries. Be sure to maintain downward pressure on the magazine spring with your thumb, while disassembling.

Disassembly of the HS magazines is accomplished by depressing the magazine locking plate and sliding the floor plate forward.



6. Now slip the complete assembly — slide (17), barrel (18), dual tension recoil spring (19) — forward and off the frame (20).



5. Pull the slide (17) slightly to release the slide catch lever (16). Then allow the slide to slowly move forward until the spring tension is released. Pull the trigger to fully unlock the slide from the frame.

FIELD STRIPPING THE PISTOL

FIELD STRIPPING THE PISTOL

Follow these instructions and your HS 2000 pistol will remain in excellent condition even after years of hard service.

1. Unload the pistol (refer to Unloading The Pistol).
2. Draw back the slide (17) to the rear stop position and lock it open. Thumbing up the slide catch lever (16).
3. Visually inspect the chamber to confirm the pistol is unloaded.
4. Rotate the slide take down lever (22) to a vertical 12 o'clock position.

